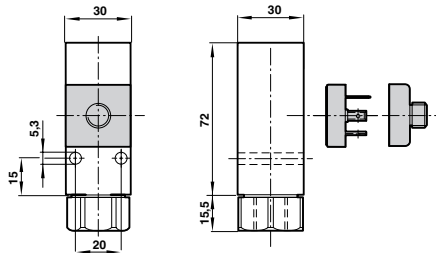


ELECTRO-MECHANICAL PRESSURE SWITCH

18D Pneumatic

-1 ... 30 bar



- Gold-plated contacts
- High cycle life
- Vibration resistant to 15 g
- Microswitch approved by UL and CSA
- Intrinsically safe operation
- Direct interface to Excelon air line units

TECHNICAL DATA

Medium:

Neutral, gaseous and liquid fluids

Operation:

Diaphragm

Ambient temperature:

-10°C ... +80°C

Consult our Technical Service for use below +2°C.

Repeatability:

±3%, of full scale

Models

STANDARD Model	Pressure range (bar)	Fluid connection	Electrical connection	Switching pressure difference	Max over pressure (bar)	Plug	Electrical connector M12 x 1 Straight x 2 m long 90° x 2 m long
----------------	----------------------	------------------	-----------------------	-------------------------------	-------------------------	------	---



0880100000000000	-1 ... 0	G1/4	DIN EN 175301-803 Form A	0,15 ... 0,18	80	-	-
0880110000000000	-1 ... 1	G1/4	DIN EN 175301-803 Form A	0,25 ... 0,35	80	-	-
0880200000000000	0,2 ... 2	G1/4	DIN EN 175301-803 Form A	0,20 ... 0,35	80	-	-
0880300000000000	0,5 ... 8	G1/4	DIN EN 175301-803 Form A	0,35 ... 0,85	80	-	-
0880400000000000	1 ... 16	G1/4	DIN EN 175301-803 Form A	0,40 ... 1,20	80	-	-
0880600000000000	1 ... 30	G1/4	DIN EN 175301-803 Form A	1,00 ... 5,00	80	-	-
0880620000000000	1 ... 30	1/4 NPT	DIN EN 175301-803 Form A	1,00 ... 5,00	80	-	-
0880226000000000*	0,2 ... 4	G1/4	DIN EN 175301-803 Form A	0,20 ... 0,35	80	0570110000000000	-
0880326000000000*	0,5 ... 8	G1/4	DIN EN 175301-803 Form A	0,35 ... 0,85	80	0570110000000000	-
0880426000000000*	1 ... 16	G1/4	DIN EN 175301-803 Form A	0,40 ... 1,20	80	0570110000000000	-
0881100000000000	-1 ... 0	Flange	DIN EN 175301-803 Form A	0,15 ... 0,18	80	-	-
0881200000000000	0,2 ... 2	Flange	DIN EN 175301-803 Form A	0,20 ... 0,35	80	-	-
0881300000000000	0,5 ... 8	Flange	DIN EN 175301-803 Form A	0,35 ... 0,85	80	-	-
0881400000000000	1 ... 16	Flange	DIN EN 175301-803 Form A	0,40 ... 1,20	80	-	-
0880160000000000*	-1 ... 0	G1/4	M12 x 1	0,15 ... 0,18	80	-	0523057000000000 0523058000000000
0880260000000000*	0,2 ... 2	G1/4	M12 x 1	0,20 ... 0,35	80	-	0523057000000000 0523058000000000
0880360000000000*	0,5 ... 8	G1/4	M12 x 1	0,35 ... 0,85	80	-	0523057000000000 0523058000000000
0880460000000000*	1 ... 16	G1/4	M12 x 1	0,40 ... 1,20	80	-	0523057000000000 0523058000000000

MODELS FOR WATER APPLICATIONS

0880323000000000	0,5 ... 8	G1/4	DIN EN 175301-803 Form A	0,35 ... 0,85	80	-	-
------------------	-----------	------	--------------------------	---------------	----	---	---

MODELS CONFORMING TO ATEX - ZONE 2 AND 22 (Ex II 3G/D)

0880280000000000	0,2 ... 2	G1/4	DIN EN 175301-803 Form A	0,20 ... 0,35	80	-	-
0880380000000000	0,5 ... 8	G1/4	DIN EN 175301-803 Form A	0,35 ... 0,85	80	-	-
0880480000000000	1 ... 16	G1/4	DIN EN 175301-803 Form A	0,40 ... 1,20	80	-	-

* Switch is LABS free, plug needs to be ordered separately

For further information
www.norgren.com/info/nec/en165

